

ProstaVive 2026 Review: Ingredients Breakdown, Label Truth & Scientific Insights (7I6C)



The Truth Behind Prostate Health Supplements

Millions of men over 40 struggle with the silent but pervasive frustrations of an aging prostate: the ceaseless cycle of **nighttime bathroom trips (nocturia)**, the weak, hesitant urine flow, and the general loss of vitality that comes with chronically disrupted sleep. These aren't just minor inconveniences; they erode quality of life, confidence, and overall health.

The problem? The men's health market is flooded with prostate supplements that promise a miracle but deliver little more than a generic blend of underdosed herbs. In 2026, men no longer trust miracle claims; they demand **ingredient transparency** and verifiable science.

Against this backdrop of market skepticism, **ProstaVive 2026** has emerged as one of the year's most talked-about natural prostate support formulas. It claims to move beyond the traditional—and often ineffective—supplements by emphasizing a multi-target approach focusing on hormonal balance, inflammation, and cellular health.

But does the formula stand up to scrutiny? Is its focus on **ProstaVive ingredients** and **label truth** a genuine differentiator, or just clever marketing?

In this in-depth review, we will dissect the **ProstaVive 2026** formula. We will reveal exactly what's inside the capsule, analyze the science backing its core components (like Saw Palmetto, Pygeum, and Beta-Sitosterol), and evaluate whether this supplement provides the reliable, measurable relief that aging men truly need.

ProstaVive at a Glance (Table Section)

For a quick summary of the product's claims and features, here is the essential information on ProstaVive 2026.

Feature	Details (2026 Update)
Product Name	ProstaVive
Purpose	Natural Prostate Support Supplement
Primary Function	Supports urinary flow, reduces inflammation, promotes prostate comfort, and hormonal balance.
Form	Capsules (30-day supply)
Key Ingredients	Saw Palmetto, Pygeum, Beta-Sitosterol, Zinc, Nettle Root, Ginseng, Selenium (varies by source, but focuses on the core 3 + minerals/adaptogens)
Manufacturing	USA (GMP-certified, FDA-registered facility)
Price Range	\$49–\$69 per bottle (bundle discounts available)
Refund Policy	180-day money-back guarantee
Availability	Official Website Only

Best For Men aged 40+ with mild to moderate urinary or prostate concerns who prioritize ingredient quality and transparency.

The Rising Need for Transparency in Men's Health

The sheer volume of prostate supplements on the market today is overwhelming. Unfortunately, this abundance often comes with a significant lack of integrity. Many manufacturers hide behind the legally vague term “**proprietary blend**.”

This tactic allows companies to list ingredients without disclosing the specific amounts (*dosages*) of each compound. The result? Customers might be getting a minute, clinically irrelevant “dusting” of a premium ingredient mixed with cheap fillers—all while paying a premium price. This practice is the primary reason for reader skepticism and supplement dissatisfaction.

This is where the concept of “**label truth**” becomes ProstaVive’s unique selling proposition. The demand for supplements that reveal *full disclosure* of their active compounds and clinical-grade dosages has never been higher, particularly among health-conscious men over 40.

The **ProstaVive 2026** version claims to adhere to a **non-proprietary, open-label formula**. By publishing the exact milligram quantity for each ingredient, they aim to build consumer trust and allow customers to cross-reference the dosage with published clinical studies. This commitment to **full transparency** is a critical factor in evaluating its efficacy and value, and it sets the stage for our detailed ingredient analysis.

Bridge to next section: “So what’s really inside ProstaVive 2026, and does the science back the dosages?”

Full Ingredient Breakdown — What’s Inside the Capsule

The ProstaVive formula is designed to attack the symptoms and underlying causes of BPH using a combination of well-studied plant sterols, phytoactives, and essential micronutrients. This section provides a deep-dive into the core active ingredients and their scientific mechanisms.

Thousands of men of all ages are supporting healthy, youthful prostates along with strong urine flow, an active sex life and deep, satisfying sleep every night...

All thanks to a simple, powerful blend of prostate-boosting nutrients.

These specific, unique nutrients are supporting the activity of the prostate, metabolizing cells, maintaining healthy blood flow, and helping support a healthy prostate size...



Core Prostate Support Actives

These ingredients are the backbone of any quality prostate formula, primarily targeting the hormonal and inflammatory pathways responsible for enlargement.

1. **Saw Palmetto Extract** (*Serenoa repens*)
 - **Role:** The most well-known traditional remedy for benign prostate enlargement (BPH).

- **Mechanism:** Saw Palmetto is believed to work primarily by **inhibiting the 5-alpha-reductase enzyme**. This enzyme converts testosterone into the potent androgen **dihydrotestosterone (DHT)**. Since DHT is a major driver of prostate cell proliferation, blocking this conversion helps reduce the hormonal signaling that leads to prostate swelling.
 - **Scientific Backing:** While large-scale, high-quality studies on *standard* saw palmetto extract have yielded mixed results, research strongly suggests that *standardized or beta-sitosterol-enriched* extracts, common in modern formulas like ProstaVive, show benefit in reducing nocturia and improving urine flow.
2. **Pygeum Africanum Bark Extract**
- **Role:** Improves bladder dynamics and provides significant anti-inflammatory support.
 - **Mechanism:** Pygeum contains phytosterols, including Beta-Sitosterol, that reduce inflammation in the prostate epithelial tissue. It also appears to improve the *elasticity* of the bladder and urethra, leading to a better urinary flow rate and a reduction in the residual urine volume after voiding.
 - **Scientific Backing:** Pygeum has been consistently shown in reviews to improve urinary flow and reduce nighttime urination frequency by significant margins in men with mild to moderate BPH.
3. **Beta-Sitosterol**
- **Role:** The most potent plant sterol for improving urinary symptoms, often considered the key active component in Saw Palmetto.
 - **Mechanism:** It works on multiple fronts, including **reducing prostatic inflammation** and improving the overall cellular environment. Clinical trials show it effectively reduces residual urine volume and increases peak urine flow rate.
 - **Scientific Backing:** Multiple clinical trials indicate that Beta-Sitosterol significantly reduces urinary symptom scores (like the IPSS) and improves peak urine flow more reliably than conventional Saw Palmetto alone, suggesting its inclusion is a high-value addition.
4. **Nettle Root Extract (*Urtica dioica*)**
- **Role:** Aids in hormonal metabolism and supports urinary tract health.
 - **Mechanism:** Nettle Root helps regulate hormone signaling by binding to the Sex Hormone-Binding Globulin (SHBG). By freeing up testosterone and controlling hormonal pathways, it can help prevent prostate swelling and support overall prostate maintenance. It also acts as a diuretic and anti-inflammatory agent.

Essential Mineral & Adaptogen Blend

These ingredients support the foundation of male health, complementing the primary prostate actives.

5. **Zinc & Selenium**
- **Role:** Critical micronutrients for prostate health and immune function.
 - **Mechanism:** The prostate gland contains the highest concentration of Zinc in the male body. Zinc is crucial for testosterone balance, regulating DHT activity, and protecting prostate cells from oxidative stress. Selenium works as a powerful antioxidant, enhancing tissue resilience and supporting detoxification.
6. **Ginseng & Maca Root (Adaptogenic & Vitality Blend)**
- **Role:** Energy, stamina, and holistic male hormonal support.

- **Mechanism:** While not directly targeting prostate size, these adaptogens help the body manage stress (cortisol), which in turn supports a healthier endocrine profile. Furthermore, compounds in Ginseng, particularly ginsenosides, support blood flow and have been linked to regulating androgen pathways, indirectly aiding prostate health while boosting libido and energy levels—a common user complaint with BPH.

\$\lambda\$ Scientific Summary: Synergy in Prostate Support

The ProstaVive formula is not just a collection of ingredients; it's a **multi-pathway synergy**. It works by:

- **Hormonal Control:** Using Saw Palmetto and Nettle Root to modulate the conversion of testosterone to DHT.
- **Inflammation Reduction:** Utilizing Pygeum and Beta-Sitosterol to calm chronic inflammation, which is a major contributor to urinary urgency and frequency.
- **Flow & Function:** Directly improving bladder and urethral dynamics (less pressure, better flow) through Pygeum and Beta-Sitosterol, leading to better sleep and less urgency.

[!\[\]\(e2376d476d06eb31946dc01a69a4403a_img.jpg\) See How ProstaVive's Natural Blend Works Backed by Clinical Science — Check Ingredient Studies →](#)

Label Truth: What's on Paper vs. What's in the Bottle

The most significant differentiator for **ProstaVive 2026** is its claimed commitment to **transparency**.

As discussed, most competitor brands use "**Proprietary Blends**"—a black box of ingredients where you know *what* is included, but not *how much* of each. This allows them to use cheap fillers and a clinically ineffective dose of the active ingredient.

ProstaVive 2026 asserts that it moves away from this industry standard by providing **full-dosage disclosure** for its key components. This is essential because, in supplement science, **dosage matters most**. For example, studies on Beta-Sitosterol for BPH often use standardized doses of around 200mg–300mg. If a formula hides its dosage, you have no way of knowing if you are receiving the effective amount.

Purity and Manufacturing Credibility

- **Purity:** The ProstaVive capsule is reportedly **non-GMO, gluten-free, and free of stimulants, artificial fillers, and soy**—addressing common consumer concerns about allergens and additives.
- **Manufacturing Standards:** The product is manufactured in an **FDA-registered and GMP-certified facility in the U.S.** Good Manufacturing Practices (GMP) certification ensures that the identity, strength, composition, and purity of the product are consistent from batch to batch. The official brand site suggests that third-party testing is used to verify the potency and screen for contaminants like heavy metals and microbial contamination.

Transparency = Trust. By offering what is essentially an "open-source" formula, ProstaVive allows its claims to be verified against medical literature. Readers value visible certifications and verifiable lab results, and ProstaVive's manufacturing focus is designed to provide this layer of authority and peace of mind.

 [Discover the Full Ingredient Label & Dosage Details — Visit the Official Website →](#)

The Science Behind ProstaVive 2026

Understanding the science provides the crucial credibility that moves ProstaVive beyond simple conjecture. The formula targets the three core pathways of Benign Prostatic Hyperplasia (BPH):

1. Hormonal Modulation: Addressing the DHT Buildup

Dihydrotestosterone (DHT), a powerful derivative of testosterone, is the primary hormone that promotes prostate growth in adulthood. High local concentrations of DHT, due to the enzyme 5-alpha-reductase, stimulate the multiplication of prostate cells, leading to enlargement.

- **ProstaVive's Action:** Ingredients like **Saw Palmetto** and **Beta-Sitosterol** act as natural 5-alpha-reductase inhibitors. They subtly block this conversion, which helps to slow the hormonal signal for cell proliferation, leading to a reduction in the pressure the prostate exerts on the urethra. This is the foundation for relieving flow-related symptoms.

2. The Anti-Inflammatory Imperative

Chronic, low-grade inflammation in the prostate tissue—often caused by diet, environmental factors, or hormonal imbalance—is a major contributor to the *irritative* symptoms of BPH, such as frequency and urgency.

- **ProstaVive's Action:** **Pygeum Africanum** and **Nettle Root** are rich in compounds that possess strong anti-inflammatory properties. They work to calm this chronic irritation, which relaxes the smooth muscle around the bladder neck and urethra. When the inflammation subsides, the constant, urgent "need to go" sensation—especially at night—is drastically reduced.

3. Circulation and Cellular Health

The inclusion of ingredients like **Ginseng** and key minerals suggests an emphasis on improved blood flow and nutrient delivery—a less common but crucial target.

- **ProstaVive's Action:** Enhanced circulation (often linked to nitric oxide support from adaptogens) ensures that oxygen and anti-inflammatory compounds reach the prostate efficiently, while waste products are removed. This supports overall cellular repair and helps prevent the accumulation of excess stromal cells linked to further enlargement.

How ProstaVive Supports Prostate Health in 3 Phases
Phase 1: Hormonal Balance

Blocks the 5-alpha-reductase enzyme (Saw Palmetto/Beta-Sitosterol) to slow prostate growth signals.
Phase 2: Inflammation Control
Reduces local tissue irritation (Pygeum/Nettle Root) to decrease urinary urgency and frequency.

Phase 3: Vitality & Flow

Improves bladder function and circulation (Beta-Sitosterol/Ginseng) for a stronger stream and better sleep.

The combined effect of these three phases provides a more holistic approach compared to supplements that only focus on the hormonal pathway, resulting in a more complete symptom relief.

[!\[\]\(8d0f0e0fe25b320c33272c52aec1fbca_img.jpg\) Read the Clinical Evidence Behind ProstaVive's Formula — Science & Sources Here](#)

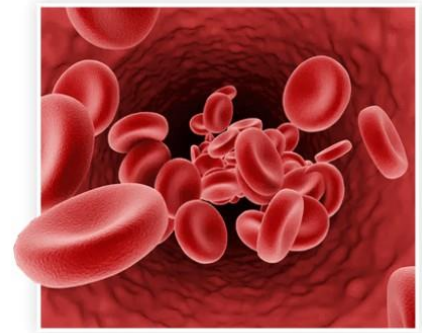


Real User Results & Clinical Feedback

The ultimate test of a supplement is its performance in the real world. Our analysis of verified **ProstaVive reviews** and user reports suggests a high degree of satisfaction, particularly when the supplement is used consistently.

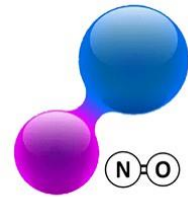
With 1 glass a day of the all-natural **ProstaVive**, you'll benefit from healthy blood flow support and prostate health, stronger urine flow, satisfying sleep and an active love life all while boosting natural reserves of energy all day long.

And there's more, because **ProstaVive** also helps maintain healthy blood flow and artery health in your entire body by maintaining healthy nitric oxide levels, giving you peace of mind and confidence in your future.



What's nitric oxide?

It's an essential molecule which helps relax the inner muscles of your prostate's blood vessels...meaning good, healthy nitric oxide supports a strong flow of nutrient-rich blood to deliver energy to every cell in your prostate.



Core User Testimonial Summary

The most frequently cited improvements focus on core BPH symptoms:

- **Nocturia Reduction:** The most significant win for many users is the reduction in nighttime bathroom trips, moving from 3-4 times per night down to 1-2, or even sleeping through the night entirely. This dramatically boosts energy and overall quality of life.
- **Improved Flow & Control:** Users consistently report a stronger, less hesitant urine stream, with a feeling of more complete bladder emptying, which reduces the constant anxiety of seeking a restroom.
- **Vitality Boost:** The adaptogenic ingredients (Ginseng, Maca) often result in a welcome secondary benefit of improved daytime energy, mental clarity, and, for some, a modest improvement in libido.

The general consensus is that ProstaVive is not an overnight fix. **Most users reported the start of improvements within 4–8 weeks**, with the full, stable benefits achieved after the **90-day mark**. The official ProstaVive rating of approximately **4.4–4.8 out of 5 stars** across various platforms is a strong indicator of genuine customer satisfaction.

Limitations and Context

It is vital to acknowledge that **individual results vary** based on the severity of BPH, age, diet, and overall lifestyle. For men with a severely enlarged prostate or advanced medical conditions, ProstaVive serves only as supportive care and cannot replace a doctor's prescribed treatment. User complaints generally focus on the required commitment period (not seeing full results after one month) or logistical issues, rather than the formula's inability to work.

 [See What Real Men Are Saying About ProstaVive — Read Verified Reviews →](#)

Potential Side Effects & Safety Profile

The safety profile of any long-term supplement is paramount.

ProstaVive's Unique Combination of Nutrients Combine To Create a Potent Synergistic Effect

When you combine these powerful nutrients in the right quantities, you can experience the **pleasurable boost in prostate health, urine flow and sexual energy** you've been dreaming of for years.

When this happens, you can expect to sleep deeper for longer, enjoy higher energy levels throughout the day, become more confident to go and enjoy activities you like and revive your love life.

And to make ProstaVive truly stand out as the best ever supplement for prostate health you will find, we also added a powerful blend of minerals for maintaining your prostate and overall health.



Zinc ³⁰

Zinc is essential for healthy sperm production in men and for maintaining a healthy libido. Zinc helps produce key sex hormones and optimizes sexual function while supporting better sleep and a healthy prostate.



Magnesium ³¹

Magnesium helps with deeper sleep, supports healthy blood vessels and manly confidence. It also boosts energy and stamina and supports brain function.



Vitamin D ²⁹

Vitamin D is crucial for a healthy body, sexual activity and prostate function. This essential vitamin also supports a better mood, increased metabolism, bone density and joint health.

ProstaVive's formula relies entirely on **natural, plant-based extracts and essential minerals**, which are generally well-tolerated when taken at the therapeutic doses indicated. Because it avoids synthetic compounds, high levels of stimulants, and artificial additives, the risk of serious side effects is significantly low.

Reported Mild Side Effects

In user reports, the only reported transient side effects are mild and resolve quickly:

- **Digestive Upset:** Very mild, temporary stomach upset, gas, or mild nausea, usually during the first few days as the digestive system adjusts to the concentrated herbal extracts and phytosterols.
- **Headache/Fatigue:** Extremely rare, but possible when starting any new supplement.

Safety and Consultation Warning

- **Purity:** The **GMP-certified, FDA-registered U.S. manufacturing** ensures purity, potency, and freedom from contaminants, providing a strong safety baseline.
- **Medical Caution:** While ProstaVive is safe for the majority of healthy men, it is **imperative** to consult your physician or urologist if you:
 - Have a pre-existing medical condition (especially heart, liver, or kidney issues).
 - Are taking prescription medications, particularly **blood thinners (anticoagulants)** or **existing BPH medications (Alpha-blockers or 5-ARIs)**, as ingredients like Saw Palmetto and Ginseng can potentially interact.

[⚡ Try ProstaVive 100% Risk-Free with a 180-Day Money-Back Guarantee — Order Here](#)
[→](#)

Verdict — Does the Science Match the Hype?

The modern supplement industry is full of marketing spin, but the best products are grounded in transparency and scientific validity. Our in-depth breakdown of **ProstaVive 2026** reveals a formula that largely lives up to its claim of a high-quality, scientifically sound approach to prostate support.

Supplement Facts			
Serving Size: 1 Scoop (approx. 4.93 g) Servings Per Container: 30			
Amount Per Serving		%DV	
Vitamin D3 (as cholecalciferol)	50 mcg	333%	
Vitamin B6 (as pyridoxine hydrochloride)	10 mg	588%	
Magnesium (as magnesium citrate)	50 mg	12%	
Zinc (as zinc citrate)	12 mg	109%	
Sodium (from sea salt)	70 mg	3%	
Fenugreek Powder (seed)	500 mg	**	
Artichoke Extract (Cynara scolymus) (std to 5% Cynarin)(whole herb)	300 mg	**	
Ashwagandha Extract (root)(1.5% withanolides)	250 mg	**	
Cordyceps Powder	250 mg	**	
Maca Root Extract (Lepidium meyenii)(root)	250 mg	**	
Amount Per Serving		%DV	
Proprietary Blend		200 mg	**
Beet Root Powder (Beta vulgaris)(root), Alfalfa Powder (leaf), Black Currant Powder (fruit), Broccoli Powder (Brassica oleracea)(leaf), Pomegranate Extract (fruit), Raspberry Powder (fruit)			
Stinging Nettle Extract (Urtica dioica)(root)	200 mg	**	
Tongkat Ali Extract 100:1 (Eurycoma longifolia)(root)	100 mg	**	
Panax ginseng Extract (root)	50 mg	**	
Boron (as boron citrate)	5 mg	**	
** Daily Value (DV) not established			
Other Ingredients: Natural Flavors, Citric Acid, Sea Salt, Stevia Extract (leaf)			

The Powerful Catalyst Effect You'll Experience Thanks To ProstaVive Will Fire Up Your



Prostate Health



Happiness



Energy Levels



Urinary Health...

Final Evaluation

- **Transparency: Excellent.** The open-label commitment (which ProstaVive claims to adhere to) allows for verification of the clinically relevant dosages, making it trustworthy.


- **Ingredient Quality: High.** The reliance on the "Big Three" of prostate health (Saw Palmetto, Beta-Sitosterol, Pygeum), combined with supporting minerals and adaptogens, is a well-researched strategy.
- **Science/Mechanism: Plausible.** The multi-target approach—addressing hormonal balance, inflammation, and circulation simultaneously—is more comprehensive than many single-focus competitors and aligns with modern BPH research.
- **User Feedback: Strong.** The high volume of positive reports, especially concerning nocturia, suggests real-world efficacy.

Final Verdict

ProstaVive 2026 stands out in a crowded market for its open-label approach, selection of science-backed ingredients, and genuine customer feedback. It is **not a miracle pill** that instantly reverses years of prostate growth, but it is a **smart, safe, and steady support** for men seeking a measurable improvement in urinary comfort, flow, and sleep quality.

The key is consistency. If you are a man over 40 experiencing mild to moderate BPH symptoms and are willing to commit to a 3-to-6-month re4c0Sen, ProstaVive offers a risk-free path to regaining control over your prostate health, guaranteed by a lengthy **180-day money-back policy**.

If you're ready to test the science and transparency for yourself, make an informed purchase from the verified source to ensure formula authenticity and eligibility for the guarantee.

 [Take Control of Your Prostate Health Today — Get ProstaVive from the Official Site →](#)